

ATRIUM



DOMMELHOF

TECHNICAL DATA

01/2019 | version 1.0

TECHNICAL COORDINATOR	HOUSEKEEPER	OTHER CONTACT
Bart Heijnen bart.heijnen@limburg.be +32 (0)477 923 254 +32 (0)11 80 5019	Jo Hulsbosch jo.hulsbosch@limburg.be +32 (0)473 695 078 +32 (0)11 80 5017	Dommelhof Secretariaat dommelhof@limburg.be +32 (0)11 80 5000

Venue

The Atrium is a flat venue, that can be fully equipped according to one's own needs and wishes. Except for the fixed stage of 4m by 10m, the room is completely empty.

Seating	None (200 people if chairs are placed)
Balcony	None
House Lights	Manually, or via DMX A24(2x ACP)

At the back of the venue there is the possibility to place technical control. The following connections are available here.

Light	DMX 1 (5p) DMX 2 (5p)
Audio	Soca IN 1-24 / OUT 1-8 Soca IN 25-48 / OUT 9-18
Power	2x 240V / 16A

There are stage elements available (scissor system up to 1m height - surface 2mx1m). These must be reserved before arrival

For work at heights, aerial work platforms are available that can be used if necessary and if clearly communicated in advance.

Stage

Measurements

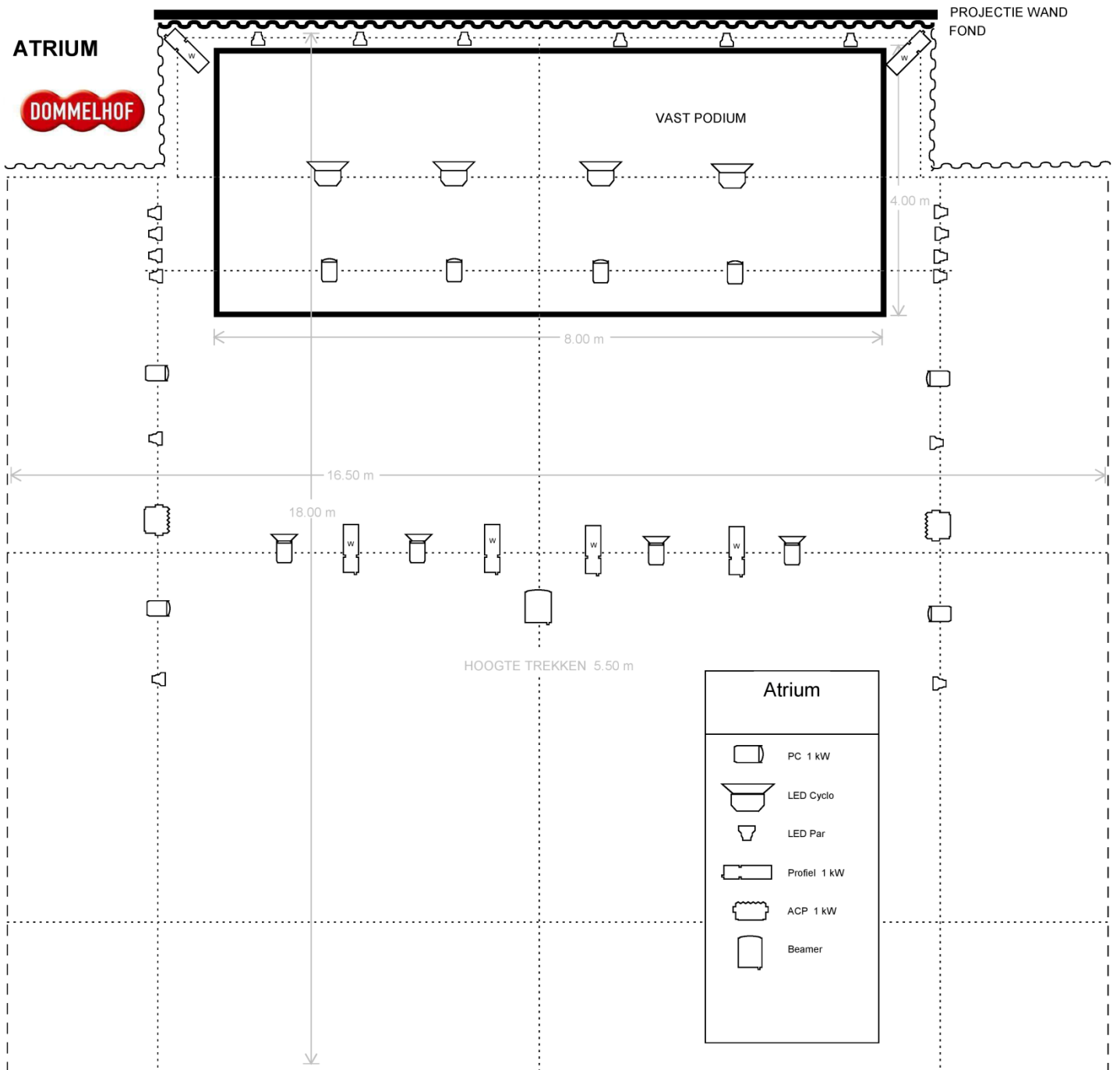
- Width	10 m
- Depth	4 m

The back wall is completely white and suited for projection. There is also a night blue fond that can cover the entire back wall.

Electricity

In the Atrium, there are a couple of power supplies

32A	1x stage left (audio) 1x stage right
125A	1x stage right (dimmer)



Audio

Dommelhof has a wide range of audio equipment. Various microphones, active or passive loudspeakers, analogue or digital mixing desks,... are available on request. In consultation with our technical coordinator and technical crew we will try to cater to your needs, taking into account the technical needs of other residencies and our own productions. Dommelhof consists of three fully equipped spaces and dozens of smaller multi-purpose rooms, so we cannot offer you a full and detailed inventory of our equipment.

We highly recommend communicating your technical needs relating audio well in advance with our technical coordinator.

- FOH-system

L / R: 2x D&B E12 with D6 amp
SUB: 2x D&B E15-X Sub with D6 amp

For purely recreational use there is a system available consisting of 4 Bose speakers hung in the 4 corners of the hall, and are stereo connected.

Lighting

Number of dimmers: 24 fixed dimmers 2 kW (possible expansion is very limited)

Dommelhof has a wide range of lighting equipment. Various fixtures, stage lights, dimmers,... are available on request. In consultation with our technical coordinator and technical crew we will try to cater to your needs, taking into account the technical needs of other residencies and our own productions. Dommelhof consists of three fully equipped spaces and dozens of smaller multi-purpose rooms, so we cannot offer you a full and detailed inventory of our equipment.

We highly recommend communicating your technical needs relating lighting well in advance with our technical coordinator.

The fixed lighting plot exists of:

Front	4x PC 1 kW 4x Profiel 1 kW
Side	8x ETC Colorsource LED-par
Top	4x PC 1 kW
Back	6x ETC Colorsource LED-par 4x LED-Cyclo
Hall	4x ETC Colorsource LED-par 4x PC 1 kW 2x ACP 1 kW

Video

For video projection, our fixed beamer hanging from the front bridge can be used. This is controlled via Clickshare, and can therefore make a wireless connection to a laptop via a USB connection.

Sanyo PLC-XM100L Projector

Lumen 5.000

Resolution 1920x1200

Input Composite (RCA), S-Video, VGA In (Dsub-15pin), DVI Digital Input, RGB In (BNC), Audio Out (Mini Jack), Network (RJ-45), USB, Component, Component, RS232 (DB-9pin)

Dommelhof also has several smaller beamers.

Rigging

Dommelhof has a wide range of rigging equipment. In consultation with our technical coordinator and technical crew we will try to cater to your needs, taking into account the technical needs of other residencies and our own productions. Dommelhof consists of three fully equipped spaces and dozens of smaller multi-purpose rooms, so we cannot offer you a full and detailed inventory of our equipment. When using you own rigging equipment, we demand the required safety certificates.

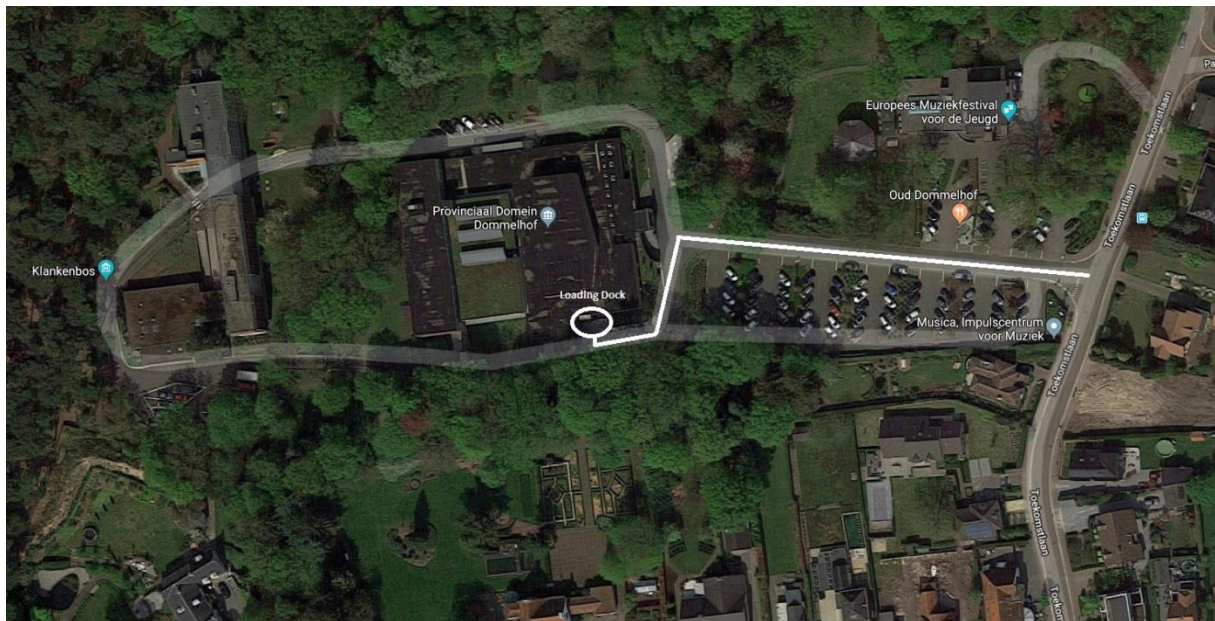
We highly recommend communicating your technical needs relating rigging well in advance with our technical coordinator.

Safety

Open fires and pyro are not allowed. The use of hazers or smoke machines has to be communicated in advance with our technical crew. All set pieces have to be fire retardant and have the required certificates.

Location

Loading dock is accessible via Toekomstlaan (see plan below).



Contact

<p>Bart Heijnen <i>Technical Coordinator</i> bart.heijnen@limburg.be +32 (0)477 923 254</p>	<p>Jan Meuwissen <i>Theatre Technician</i> jan.meuwissen@limburg.be +32 (0)11 80 50 20</p>	<p>Tom Oversteijns <i>Theatre Technician</i> tom.oversteijns@limburg.be +32 (0)11 80 50 21</p>
<p>Jo Hulsbosch <i>Housekeeper</i> jo.hulsbosch@limburg.be +32 (0)473 695 078</p>	<p>Robbe Neyens <i>Theatre Technician</i> robbe.neyens@limburg.be +32 (0)11 80 50 22</p>	<p>Erik Minnen <i>Theatre Technician</i> erik.minnen@limburg.be +32 (0)11 80 50 23</p>